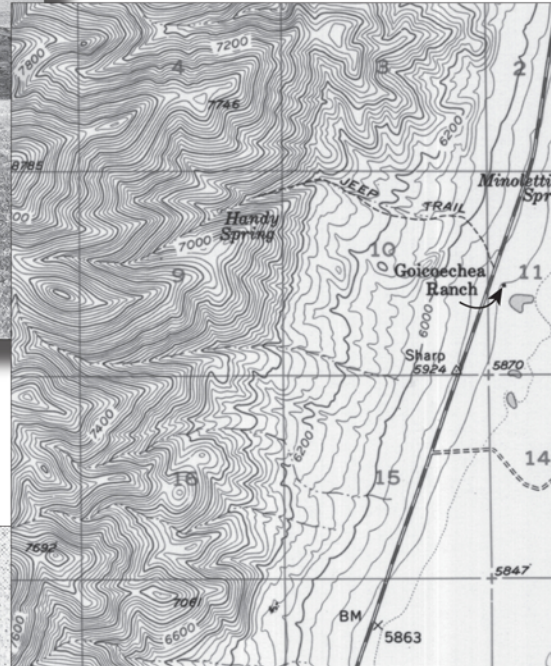


One of the Earliest Ranches in Newark Valley



Above, a modern photograph of the 1880s-1900 adobe brick ranch structure, taken in 2008.

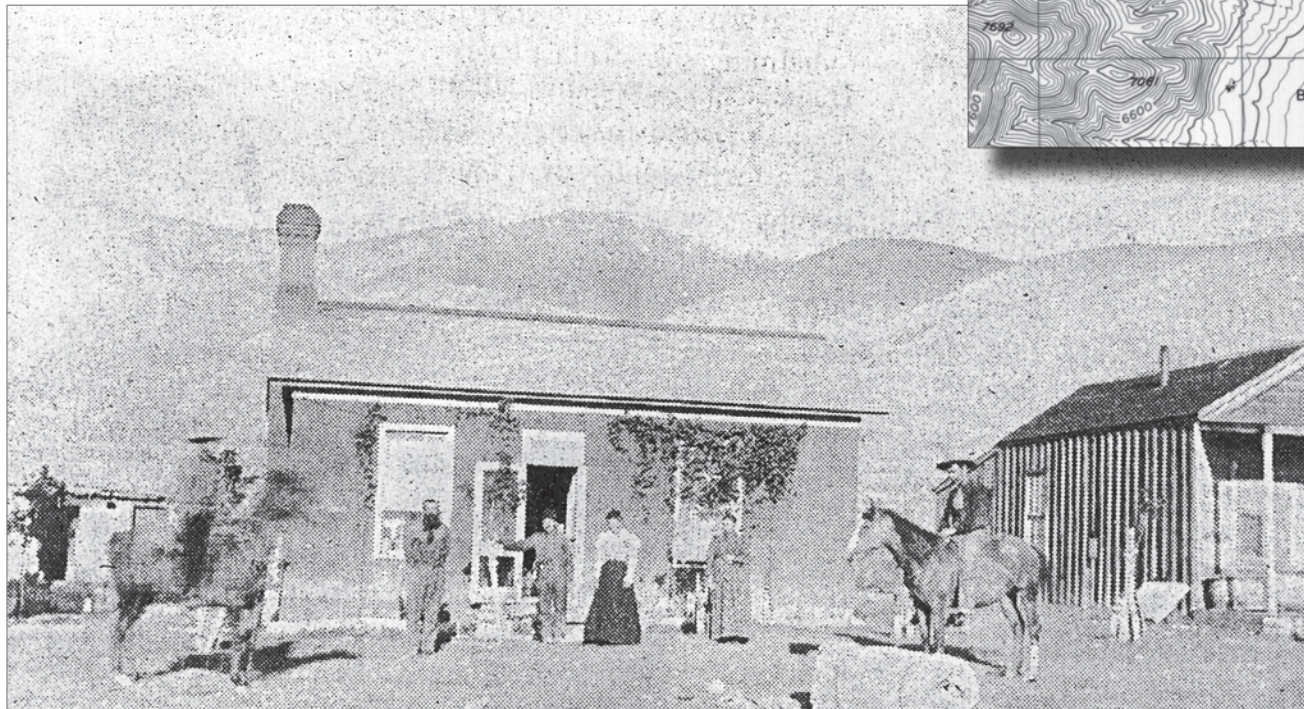
Below, the M S Sharp Ranch is identified as the Goicoechea Ranch on the 1957 Diamond Springs, Nevada, 15-minute U.S.G.S. topographic quadrangle.



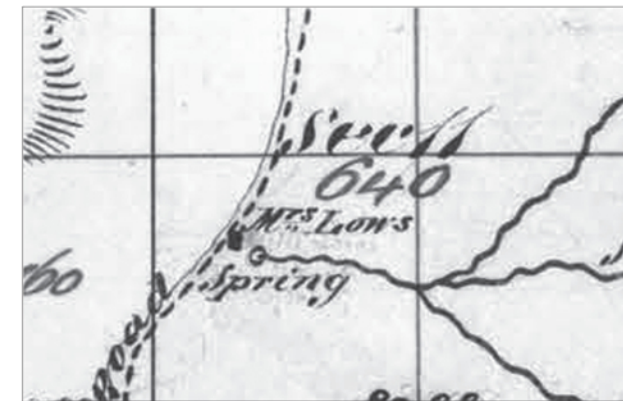
This is the location of one of the earliest ranches in Newark Valley, known by 1885 as the M S Sharp Ranch. It has had several owners through the years, including the Julius Minoletti family, the William A. Moore family, and Julian Goicoechea. The 1957 Diamond Springs, Nevada, 15-minute topographic quadrangle shows the location of a structure and identifies it as the Goicoechea Ranch.

This structure, built sometime between 1880 and 1900, was an old adobe brick residential ranch building. It was occupied by the various families who lived on the ranch from the 1880s to the late 1990s.

This sign serves as a dedication to the early ranchers and pioneers who first settled in Newark Valley.



Above, a photograph of the Minoletti family taken about 1890, looking west, in front of their adobe brick ranch house. The individuals on the horses are unknown; those standing in front of the structure are Julius, Joe, Lena and Maria Minoletti.



The map to the left is a portion of the 1871 General Land Office Plat Map for Township 22 North, Range 55 East, which identifies a structure near the general location of the adobe brick ranch house. The structure is identified as "Mrs. Low's," who may have been the first (unrecorded) occupant of the ranch.

This interpretive sign was sponsored by Barrick Gold U.S., Inc.